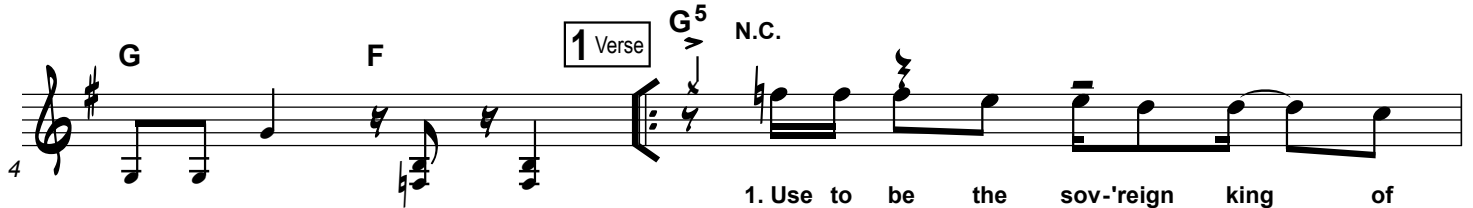
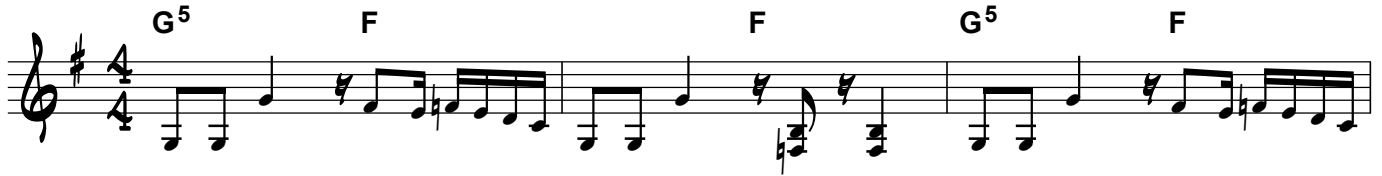


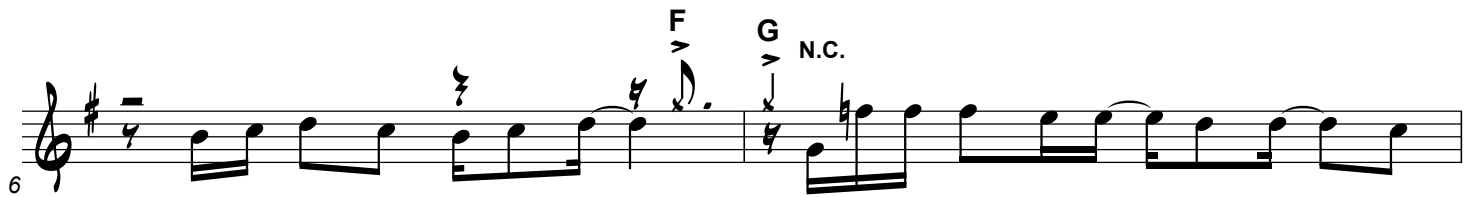
# New Day

Paul Reeves, Michael Whitworth  
Arr. by Erik Foster

♩ = 90



1. Use to be the sov-'reign king of  
2. Ab - di - cate i - dent - i - ty, it's

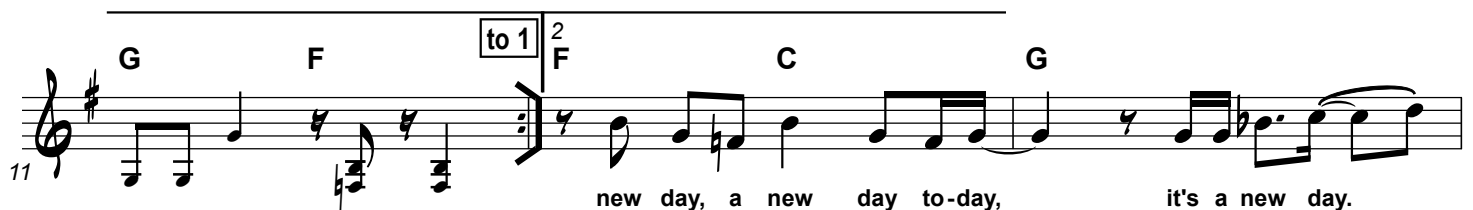


make be-lieve and fool-ish - ly,  
all of You and none of me.

I'd try to shake and break the chains off  
I'm clean, it's You and me I



of a man al - read - y free. It's a new day, a new day to-day.  
dis-ap - pear and all you see. It's a



new day, a new day to-day, it's a new day.



New day, a new day to-day.

I turn to look back on the man I used to

17 be., but You stand in the way of my past, You're all I see.

20 3. Still I re-main tied to the leash that wraps a-round me.

23 Take back the ten-den-cy for me to try to earn my keep. It's a new day, a new day to-day.

26 4. I used to buy in - to the lies and

29 let the sales - men come in - side. I used to hide be - hind the blinds but

31 now it's time to go out - side. It's a new day, a new day to-day. it's a new day.

34 New day, a new day to-day. I turn to look back on the man I used to

37 be., but You stand in the way of my past, You're all I see.

40 Musical notation for measures 40-42. Chords: G<sup>5</sup>, F, G<sup>5</sup>, F, C, G<sup>5</sup>, F. Includes repeat signs.

43 **6 Bridge** Musical notation for measures 43-45. Chords: G<sup>5</sup>, F, C, G, F. Includes repeat signs.  
 Death now where is thy sting? Broke the chains and now I'm free. Death now, where is thy sting?

46 **7 Chorus** Musical notation for measures 46-48. Chords: C, G, F, C, G. Includes repeat signs.  
 Tore the veil and now, I see. New day, a new day to-day. It's a

49 Musical notation for measures 49-50. Chords: F, C, G, F.  
 New day, a new day to - day. I

51 **8 Bridge** Musical notation for measures 51-52. Chords: F, C/E, D, C, G. Includes triplets.  
 turn to look back on the man I used to be., but You

53 Musical notation for measures 53-54. Chords: F, C/E, Dm<sup>7</sup>, C, G, F. Includes triplets.  
 stand in the way of my past, You're all I see.

55 Musical notation for measures 55-56. Chords: F, C/E, Dm<sup>7</sup>, C, G, F. Includes triplets.  
 Sha - dows are scat - ter - ing, dawn is break - ing free. The

57 Musical notation for measures 57-58. Chords: F, C/E, Dm<sup>7</sup>, C, G, F, G, F. Includes triplets.  
 night is be - hind us and now, You're all I see. All I see is it's a

9 Chorus

1 - Repeat to Chorus

60 F C G B $\flat$  F C  
new day, a new day to-day. it's a new day. New day, a new day to-day.

63 G F to 9 2 F C G  
It's a New day, a new day to-day.